

Federico Cantini <federico.cantini@lib4ri.ch>

Getting started with L^AT_EX

What is L^AT_EX



Unless otherwise noted, this work is licensed under a [Creative Commons Attribution 4.0 International License](https://creativecommons.org/licenses/by/4.0/), which means that it can be freely copied, redistributed and adapted as long as appropriate attribution is given.

What you will take home

- Overview of L^AT_EX workflow
- L^AT_EX basic features including
 - Document's info (title, author)
 - Document sectioning
 - Inclusion of figures and simple tables.
 - Inclusion of simple math formulae
 - Bibliography management
- Know where/how to find further documentation about L^AT_EX.

L^AT_EX is a system for high quality typesetting of documents.

L^AT_EX (first rel. 1984 by L. Lamport) is a set of macros for T_EX.

T_EX (first rel. 1978 by D. Knuth) is a low-level language created to typeset documents.

The purpose of L^AT_EX is to simplify T_EX typesetting.

L^AT_EX is extensible. Additional packages can be developed to add functionalities.

L^AT_EX is NOT a word processor! Instead, L^AT_EX encourages authors not to worry too much about the appearance of their documents but to concentrate on getting the right content.¹

¹<https://www.latex-project.org/about/>

Why use L^AT_EX

- Professional-looking documents
- Consistency throughout the document
- Focus on the content
- Easily switch the style/type of the document
- It's free software (both as in free beer and free speech)¹

- Typesetting journal articles, technical reports, books, and slide presentations.
- Control over large documents containing sectioning, cross-references, tables and figures.
- Advanced typesetting of mathematics.
- Automatic generation of bibliographies and indexes.

¹<https://www.gnu.org/philosophy/free-sw.en.html>

What you can use L^AT_EX for

The image displays a musical score for guitar, consisting of five staves of music in 4/4 time. The first staff is in treble clef with a key signature of one flat (B-flat). The second staff is in bass clef with a key signature of one flat. The third and fourth staves are in treble clef with a key signature of two flats (B-flat and E-flat). The fifth staff is in bass clef with a key signature of two flats. The music includes various rhythmic patterns, including eighth and sixteenth notes, and rests. Fingerings are indicated by numbers 1-4. Trills are marked with 'tr' above notes 8 and 9. Below the music are four chord diagrams for D, Cadd9, G/B, and Gm/Bb, each with its name printed underneath. The lyrics 'And the colours of the sea blind your eyes with trembling mermaids' are centered below the chord diagrams.

xxo
D

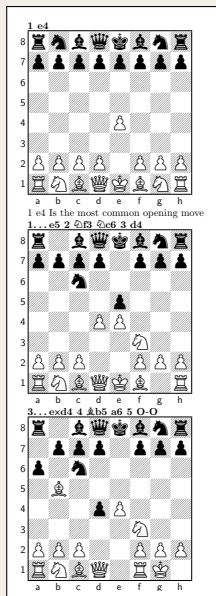
x o
Cadd9

x oo
G/B

x oo
Gm/Bb

And the colours of the sea blind your eyes with trembling mermaids

What you can use L^AT_EX for



How \LaTeX compares to a word processor?

1. \LaTeX should always be used instead of a word processor
2. \LaTeX is obsolete compared to word processors but still required in scientific writing
3. They foster different approaches and the choice might depend on several factors

